



Call for Price

4 Elevations Available

 3,664

 5

 3.5

 2

 2

The Astoria is one of our most popular floor plans. This beautiful home features 3,664 sqft of luxurious living with 5 bedrooms and 3.75 baths. Guests are greeted in the spacious 2-story Foyer with a dramatic curved staircase and French doors opening to the Den.

Entertain guests in the formal dining room, complete with gorgeous coffered ceiling with crown moldings. The butlers pantry provides extra storage with its walk-in pantry as well as extra space to prep. The butler's pantry provides direct access from the dining room to the kitchen.

In the kitchen you will find a culinary lovers dream. From the beautiful generously sized slab island to the stainless steel appliances. The Island is ideal for informal meals or just a gathering with friends and family. Adjacent to the kitchen, the Nook is the perfect space for your casual dining, while the covered patio is fabulous for additional entertaining or just relaxing.

The main floor guest suite is picture perfect for friends and family visiting-whether it be short term or long term. The adjacent guest bath, with its beautiful designer touches and walk-in tiled shower, helps create a private and easily accessible space for your guests.

The focus of the upper level is the fabulous master suite, with its soaring vaulted ceiling, that leads out to a wall of beautiful windows. It doesn't end there though. Walk through the french doors and you are led to the master en suite, which includes luxurious finishes, walk-in shower with tile surround and mud set, and a stunning free-standing soaking tub.



AmericanClassicHomes.com

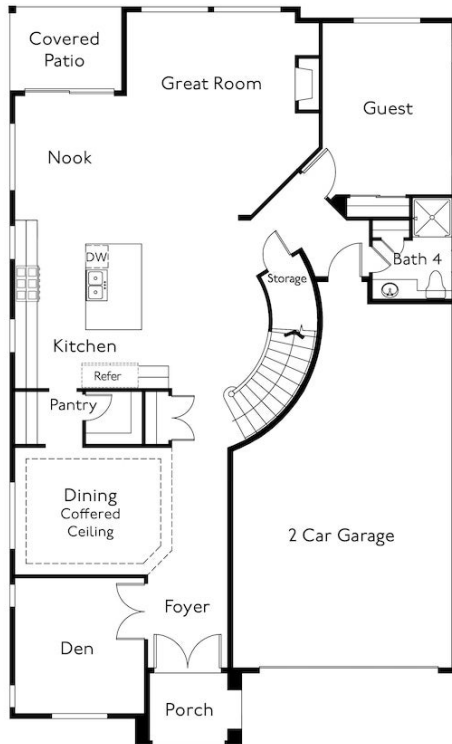
Pricing, features, and availability are subject to change without notice. American Classic Homes makes reasonable efforts to provide accurate information, however, no warranties or representations are made as to its accuracy and American Classic Homes assumes no liability or responsibility for any errors in pricing content. All pricing information, including promotions and incentives, must be verified by an authorized representative for the appropriate community and home. Photography, floor plans, elevations, renderings, virtual tours, maps, square footage, and dimensions are approximate and for illustration purposes only, and will vary from homes as built and are subject to change without notice. Homes in each neighborhood may be owned and sold by a separate limited liability company (LLC) or other corporate entity.



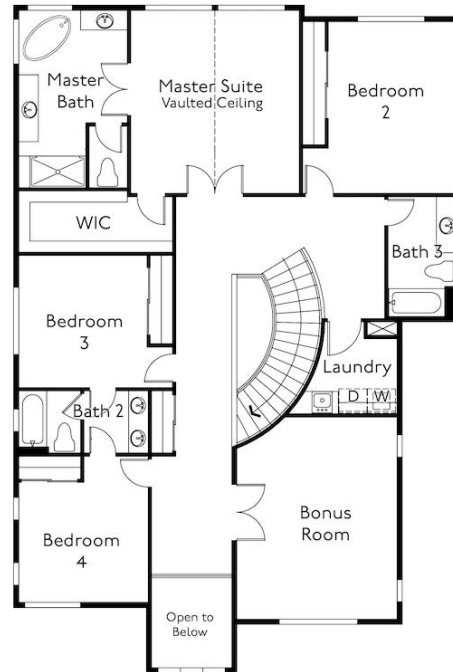
American ClassicHomes



The Astoria 3664



Main Level



Upper Level



AmericanClassicHomes.com

Pricing, features, and availability are subject to change without notice. American Classic Homes makes reasonable efforts to provide accurate information, however, no warranties or representations are made as to its accuracy and American Classic Homes assumes no liability or responsibility for any errors in pricing content. All pricing information, including promotions and incentives, must be verified by an authorized representative for the appropriate community and home. Photography, floor plans, elevations, renderings, virtual tours, maps, square footage, and dimensions are approximate and for illustration purposes only, and will vary from homes as built and are subject to change without notice. Homes in each neighborhood may be owned and sold by a separate limited liability company (LLC) or other corporate entity.