



## Call for Price

### 1 Elevations Available

	4,005
	5
	3.5
	2
	2

This Benton home plan boasts approximately 4,005 square feet of living space and offers 5 bedrooms, 3.75 baths, a spacious patio, 3 fireplaces, and a 2-car garage.

The spacious gourmet kitchen offers a generously sized island, with an abundance of eating options between the island and the nook area, as well as a butler's pantry. Take dinners outside on the outdoor patio that offers its very own fireplace. The great room features an impressive fireplace, built-in cabinets, and it gives additional access to the home's patio. The large dining room features a similar must-see beamed ceiling.

Additionally, on the main level, you will find an optional main level bedroom that can also be utilized as an office. This room is conveniently located nearby the main level bathroom.

On the second level of the Benton home plan, you'll find the treasure of the home, the grand master suite. The spacious suite includes its very own fireplace and sitting area, an exceptionally large walk-in closet, and a spa-inspired 5-piece master bathroom.

Each of the 3 additional bedrooms on this level of the home include their very own walk-in closets. Two of the bedrooms share a jack-and-jill bathroom. The large bonus room offers abundant space that can be turned into anything from a movie theater space to e-learning space, the opportunities are endless.



[AmericanClassicHomes.com](http://AmericanClassicHomes.com)

Pricing, features, and availability are subject to change without notice. American Classic Homes makes reasonable efforts to provide accurate information, however, no warranties or representations are made as to its accuracy and American Classic Homes assumes no liability or responsibility for any errors in pricing content. All pricing information, including promotions and incentives, must be verified by an authorized representative for the appropriate community and home. Photography, floor plans, elevations, renderings, virtual tours, maps, square footage, and dimensions are approximate and for illustration purposes only, and will vary from homes as built and are subject to change without notice. Homes in each neighborhood may be owned and sold by a separate limited liability company (LLC) or other corporate entity.



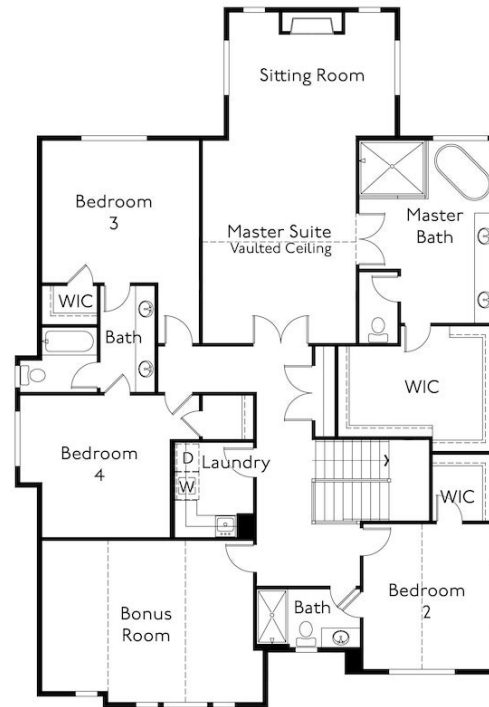
# American ClassicHomes



## The Benton 4005



Main Level



Upper Level

[www.AmericanClassicHomes.com](http://www.AmericanClassicHomes.com)

Renderings and floor plans are artist's concept and for illustrative purposes only. Standard features may vary by community. Floor plans, dimensions, garages and patios may not be available in all communities or on all home sites. In a continuing effort provide a quality product, we reserve the right to change floor plans, elevations, specifications and prices without notice.



[AmericanClassicHomes.com](http://AmericanClassicHomes.com)

Pricing, features, and availability are subject to change without notice. American Classic Homes makes reasonable efforts to provide accurate information, however, no warranties or representations are made as to its accuracy and American Classic Homes assumes no liability or responsibility for any errors in pricing content. All pricing information, including promotions and incentives, must be verified by an authorized representative for the appropriate community and home. Photography, floor plans, elevations, renderings, virtual tours, maps, square footage, and dimensions are approximate and for illustration purposes only, and will vary from homes as built and are subject to change without notice. Homes in each neighborhood may be owned and sold by a separate limited liability company (LLC) or other corporate entity.