



Call for Price

1 Elevations Available

	3,629
	5
	4.0
	2
	4

The Clyde floor plan offers a total of approx. 3,629 square feet of living space over four floors and a 2-car garage. The main three floors of the home are approx. 2,707 square feet and feature 3 bedrooms, 2 full bathrooms, as well as 2 powder bathrooms.

The main floor features an open gourmet kitchen with a generously sized island. Steps away from the kitchen you'll find the dining room with a built-in buffet and living room, both of which are ideally situated and perfect for entertaining. Take dinners outside on the outdoor covered rear deck that offers its very own see-thru fireplace via the living room. Additionally, on this level, you'll find an office with an adjacent powder room.

On the second floor, you'll find the luxurious and spacious master suite with a large walk-in closet. You'll love master suite's spa-inspired bathroom, which includes a freestanding soaking tub and a large walk-in shower with a bench. Also on this floor, you'll find 2 additional bedrooms, a hallway bathroom with double sinks, and a spacious laundry room.

The third floor features a bonus room with vaulted ceilings, a powder bathroom, unfinished attic space, and an expansive roof top deck.

The basement of this home features a 922 approx. square foot AADU with two bedrooms, kitchenette, private bathroom, and has a private entrance. The AADU can be utilized as an in-law suite for multi-generational living, for extended stay guests, or as an income producing space.



AmericanClassicHomes.com

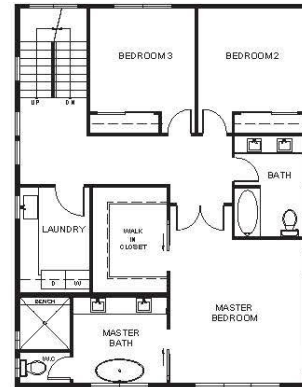
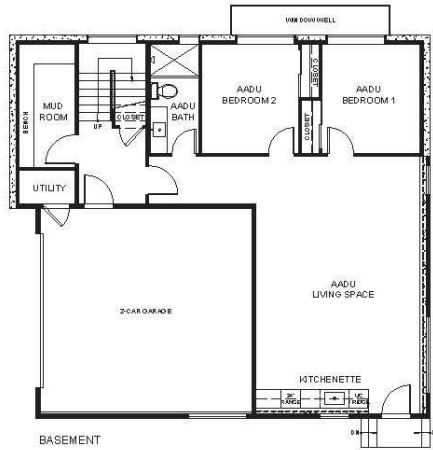
Pricing, features, and availability are subject to change without notice. American Classic Homes makes reasonable efforts to provide accurate information, however, no warranties or representations are made as to its accuracy and American Classic Homes assumes no liability or responsibility for any errors in pricing content. All pricing information, including promotions and incentives, must be verified by an authorized representative for the appropriate community and home. Photography, floor plans, elevations, renderings, virtual tours, maps, square footage, and dimensions are approximate and for illustration purposes only, and will vary from homes as built and are subject to change without notice. Homes in each neighborhood may be owned and sold by a separate limited liability company (LLC) or other corporate entity.



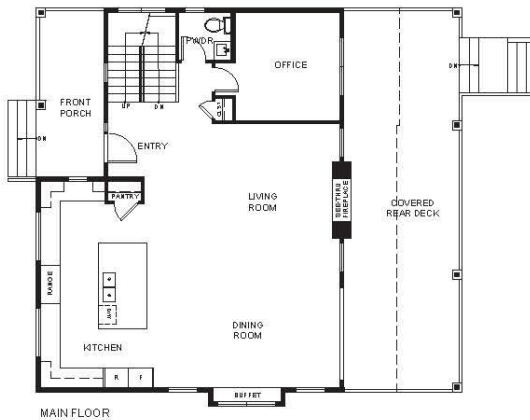
American Classic Homes



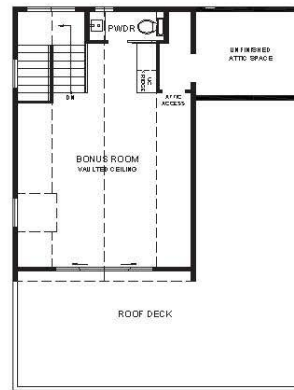
Wallingford 4230 2nd Ave NE
Clyde Plan 2,707 sf / 922 sf AADU



SECOND FLOOR



MAIN FLOOR



THIRD FLOOR

www.AmericanClassicHomes.com



AmericanClassicHomes.com

Pricing, features, and availability are subject to change without notice. American Classic Homes makes reasonable efforts to provide accurate information, however, no warranties or representations are made as to its accuracy and American Classic Homes assumes no liability or responsibility for any errors in pricing content. All pricing information, including promotions and incentives, must be verified by an authorized representative for the appropriate community and home. Photography, floor plans, elevations, renderings, virtual tours, maps, square footage, and dimensions are approximate and for illustration purposes only, and will vary from homes as built and are subject to change without notice. Homes in each neighborhood may be owned and sold by a separate limited liability company (LLC) or other corporate entity.