



Call for Price

1 Elevations Available

	4,397
	5
	3.5
	3
	3

The Hawthorne floor plan offers 5 bedrooms and 3.5 bathrooms spread over approx. 4,397 square feet, and impressive 2-story foyer, and 3 stories of luxurious living.

The main floor features an open gourmet kitchen with a generously sized island. Steps away from the kitchen you'll find the convenient eating nook and living room with a vaulted ceiling and fireplace. From the nook and living room you will enjoy access to the spacious outdoor patio, perfect for entertaining. Adjoining the kitchen, you'll find the convenient butler's pantry that offers an abundant amount of storage and prep space and offers direct access to the large formal dining room.

Additionally, on the main floor, you will find an office that can be used as an optional main floor guest bedroom. This room is conveniently located nearby the main floor powder bathroom.

The second level features a master suite with a spacious walk-in closet as well as a luxurious spa-inspired master bathroom with a free-standing soaking tub. Additionally, you will find 2 bedrooms, a hallway bathroom with double sinks, and a spacious laundry room.

The basement of this home features 2 additional bedrooms both with walk-in closets, a rec room, and a mud room with bench off the 3-car garage.



AmericanClassicHomes.com

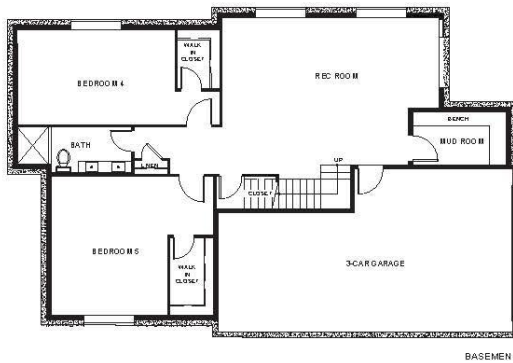
Pricing, features, and availability are subject to change without notice. American Classic Homes makes reasonable efforts to provide accurate information, however, no warranties or representations are made as to its accuracy and American Classic Homes assumes no liability or responsibility for any errors in pricing content. All pricing information, including promotions and incentives, must be verified by an authorized representative for the appropriate community and home. Photography, floor plans, elevations, renderings, virtual tours, maps, square footage, and dimensions are approximate and for illustration purposes only, and will vary from homes as built and are subject to change without notice. Homes in each neighborhood may be owned and sold by a separate limited liability company (LLC) or other corporate entity.



American ClassicHomes



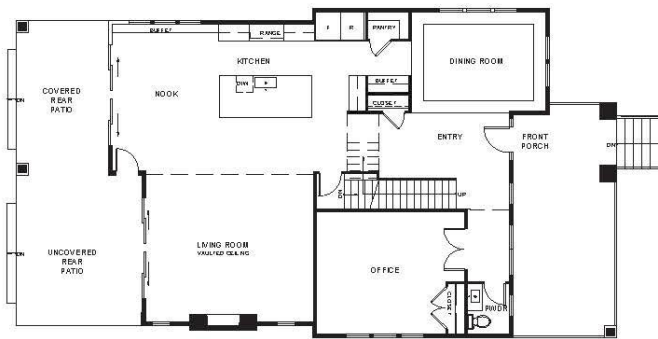
Laurelhurst 5107 48th Ave NE
Hawthorne Plan 4,397 sf



BASEMENT



UPPER FLOOR



MAIN FLOOR

www.AmericanClassicHomes.com



AmericanClassicHomes.com

Pricing, features, and availability are subject to change without notice. American Classic Homes makes reasonable efforts to provide accurate information, however, no warranties or representations are made as to its accuracy and American Classic Homes assumes no liability or responsibility for any errors in pricing content. All pricing information, including promotions and incentives, must be verified by an authorized representative for the appropriate community and home. Photography, floor plans, elevations, renderings, virtual tours, maps, square footage, and dimensions are approximate and for illustration purposes only, and will vary from homes as built and are subject to change without notice. Homes in each neighborhood may be owned and sold by a separate limited liability company (LLC) or other corporate entity.