



## Call for Price

### 1 Elevations Available

	4,402
	5
	4.5
	2
	3

The stunning Newberry home plan is 4,402 approx. sq. ft. and features 5 bedrooms, 4.5 baths, a main level den, a spacious outdoor patio, a sitting room in the master suite, and a third level media and recreation room.

The focal point of this beautiful home is the open gourmet kitchen, which flows into the large eating nook and the striking great room. The kitchen is an entertainer's delight! The kitchen features professional style appliances as well as additional storage space with a walk-in pantry.

The exquisite dining room, with rich millwork detail, is located directly off the foyer. Additionally off of the foyer is the home's private den, the main level bathroom, and the helpful mud room.

The home's sizeable master suite, located on the second floor, boasts not only its own sitting area, but also offers a spa-like master bathroom with a stand-alone soaking tub, over-sized walk-in shower and adjacent walk-in master closet with built-in designer closet system.

Also located on the second level of the home you'll find the 3 spacious bedrooms, 2 bathrooms and the laundry room.

The third level of this home showcases the generously sized Bonus and Media rooms, both with vaulted ceilings. Additionally on this level is the home's 5th bedroom, with its own walk in closet, and a conveniently located bathroom.



[AmericanClassicHomes.com](http://AmericanClassicHomes.com)

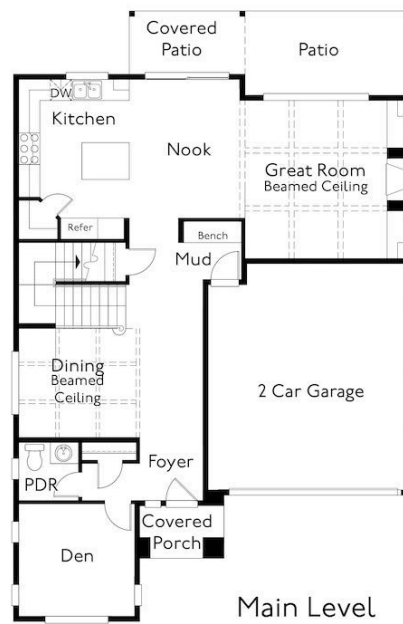
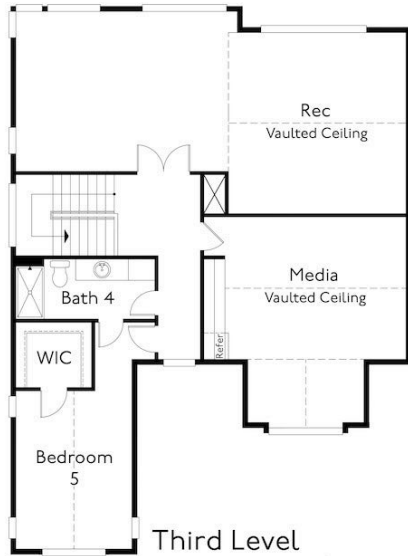
Pricing, features, and availability are subject to change without notice. American Classic Homes makes reasonable efforts to provide accurate information, however, no warranties or representations are made as to its accuracy and American Classic Homes assumes no liability or responsibility for any errors in pricing content. All pricing information, including promotions and incentives, must be verified by an authorized representative for the appropriate community and home. Photography, floor plans, elevations, renderings, virtual tours, maps, square footage, and dimensions are approximate and for illustration purposes only, and will vary from homes as built and are subject to change without notice. Homes in each neighborhood may be owned and sold by a separate limited liability company (LLC) or other corporate entity.



# American Classic Homes



Newberry 4402



[AmericanClassicHomes.com](http://AmericanClassicHomes.com)

Pricing, features, and availability are subject to change without notice. American Classic Homes makes reasonable efforts to provide accurate information, however, no warranties or representations are made as to its accuracy and American Classic Homes assumes no liability or responsibility for any errors in pricing content. All pricing information, including promotions and incentives, must be verified by an authorized representative for the appropriate community and home. Photography, floor plans, elevations, renderings, virtual tours, maps, square footage, and dimensions are approximate and for illustration purposes only, and will vary from homes as built and are subject to change without notice. Homes in each neighborhood may be owned and sold by a separate limited liability company (LLC) or other corporate entity.