



UNDER CONSTRUCTION



# \$2,349,950

### LOCATION

1116 N 34th Street, Renton WA 98056  
Lower Kennydale Spot Lots

### PLAN

Monterey

 3,971 |  5 |  4.0 |  3 |  2

This meticulously designed Monterey floor plan spans 3,971 sq ft, offering 4 bedrooms plus a den/optional 5th bedroom and 4 bathrooms. The heart of the home is an open-concept living space integrating the kitchen, dining, and family room. The gourmet kitchen features a generous island, ideal for casual dining. The primary suite boasts vaulted ceilings, a large walk-in closet, and a spa-inspired bathroom with a soaking tub. Each bedroom has a spacious closet, and the optional den on the main level provides flexibility for a home office or guest accommodations. The upper-level bonus room offers versatile space. Convenience meets luxury with a second-floor laundry room and a 3-car garage, catering to modern lifestyles.

- Easy access to I405 with a view of Lake Washington
- Covered front porch and covered back patio
- 3 car garage
- A spacious open-concept living space
- Generously sized island
- Optional den or 5th bedroom on the main level
- Walk-in closet in each bedroom
- The primary bedroom features a vaulted ceiling and a huge walk-in closet
- Upper-level bonus room with vaulted ceilings



[AmericanClassicHomes.com](https://www.AmericanClassicHomes.com)

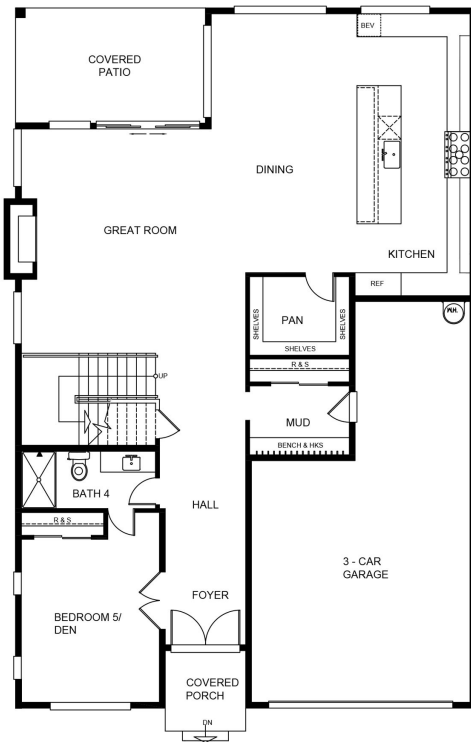
Pricing, features, and availability are subject to change without notice. American Classic Homes makes reasonable efforts to provide accurate information, however, no warranties or representations are made as to its accuracy and American Classic Homes assumes no liability or responsibility for any errors in pricing content. All pricing information, including promotions and incentives, must be verified by an authorized representative for the appropriate community and home. Photography, floor plans, elevations, renderings, virtual tours, maps, square footage, and dimensions are approximate and for illustration purposes only, and will vary from homes as built and are subject to change without notice. Homes in each neighborhood may be owned and sold by a separate limited liability company (LLC) or other corporate entity.



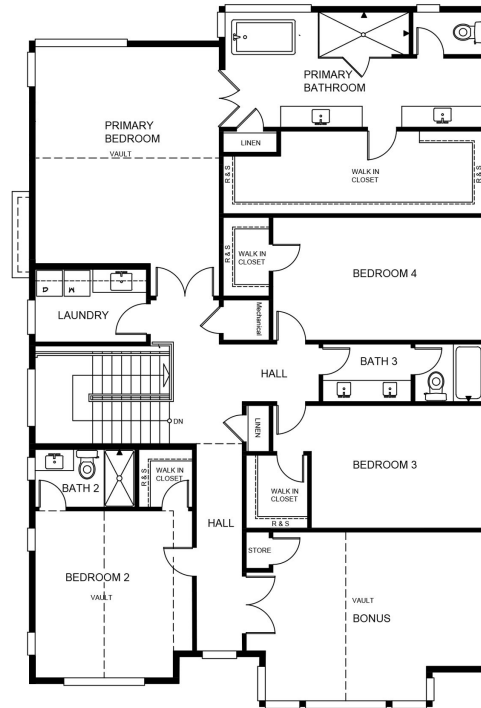
# American Classic Homes



1116 N 34th Street  
Monterey Plan 3,971 SF



MAIN FLOOR PLAN



UPPER FLOOR PLAN

[www.AmericanClassicHomes.com](http://www.AmericanClassicHomes.com)  
Renderings and floor plans are artist's concept and for illustrative purposes only. Standard features may vary by community. Floor plans, dimensions, garages and patios may not be available in all communities or on all home sites. In a continuing effort provide a quality product, we reserve the right to change floor plans, elevations, specifications and prices without notice.



[AmericanClassicHomes.com](http://AmericanClassicHomes.com)

Pricing, features, and availability are subject to change without notice. American Classic Homes makes reasonable efforts to provide accurate information, however, no warranties or representations are made as to its accuracy and American Classic Homes assumes no liability or responsibility for any errors in pricing content. All pricing information, including promotions and incentives, must be verified by an authorized representative for the appropriate community and home. Photography, floor plans, elevations, renderings, virtual tours, maps, square footage, and dimensions are approximate and for illustration purposes only, and will vary from homes as built and are subject to change without notice. Homes in each neighborhood may be owned and sold by a separate limited liability company (LLC) or other corporate entity.