



## Call for Price

### 1 Elevations Available

	5,161
	6
	5.5
	3
	4

The Wellington is a highly desirable and functional floor plan featuring a total of 5,161 Sq. Ft. of living space over 4 levels. The top 3 levels of the home are 4,327 Approx. Sq. Ft. and feature 5 bedrooms and 3 full bathrooms as well as 2 three-quarter bathrooms.

The bottom level of this home is an optional 834 Approx. Sq. Ft. ADU (Accessory Dwelling Unit) which includes a bedroom, kitchenette, private bathroom, optional storage, and has a private entrance. The ADU can be utilized as an in-law suite for multi-generational living, for extended stay guests, or as an income producing space.

This beautiful uniquely Northwest craftsman style home is perfect for entertaining. The large open chef's kitchen, which features a large island for extra prep space and casual bar seating, opens to the expansive great room with a beautiful beamed ceiling. Enjoy dining in the elegant dining room, connected to the kitchen via the home's butler pantry walkway, or take the entertainment outside on the large covered porch or patio located off the eating nook.

Conveniently located downstairs near the entrance of the home, the office is an ideal flex space that can be utilized as an office, playroom or it as a guest room with its walk-in closet. This flexible room has easy access to the main floor powder room through a private entrance.

One floor up, you'll find the luxurious and spacious master suite featuring an abundance of windows for added natural light in both the bedroom and the master's sitting area. At night bring light to the room with the master suite's very own exceptional fireplace. You'll also love master suite's the spa-inspired master bathroom, which includes with a freestanding soaking tub and the large walk-in shower with a bench. Conveniently located off the master bathroom is the large walk-in



[AmericanClassicHomes.com](http://AmericanClassicHomes.com)

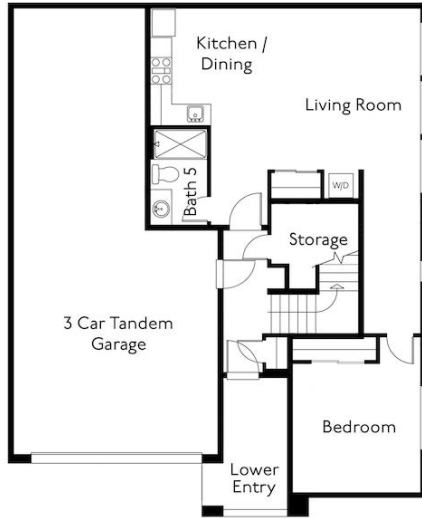
Pricing, features, and availability are subject to change without notice. American Classic Homes makes reasonable efforts to provide accurate information, however, no warranties or representations are made as to its accuracy and American Classic Homes assumes no liability or responsibility for any errors in pricing content. All pricing information, including promotions and incentives, must be verified by an authorized representative for the appropriate community and home. Photography, floor plans, elevations, renderings, virtual tours, maps, square footage, and dimensions are approximate and for illustration purposes only, and will vary from homes as built and are subject to change without notice. Homes in each neighborhood may be owned and sold by a separate limited liability company (LLC) or other corporate entity.



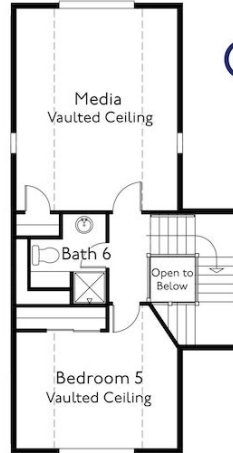
American  
ClassicHomes



The Wellington



Lower Level ADU



Third Level



Main Level



Upper Level

American  
ClassicHomes



[AmericanClassicHomes.com](http://AmericanClassicHomes.com)

Pricing, features, and availability are subject to change without notice. American Classic Homes makes reasonable efforts to provide accurate information, however, no warranties or representations are made as to its accuracy and American Classic Homes assumes no liability or responsibility for any errors in pricing content. All pricing information, including promotions and incentives, must be verified by an authorized representative for the appropriate community and home. Photography, floor plans, elevations, renderings, virtual tours, maps, square footage, and dimensions are approximate and for illustration purposes only, and will vary from homes as built and are subject to change without notice. Homes in each neighborhood may be owned and sold by a separate limited liability company (LLC) or other corporate entity.